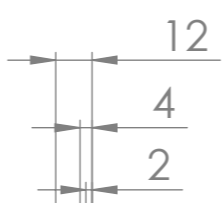
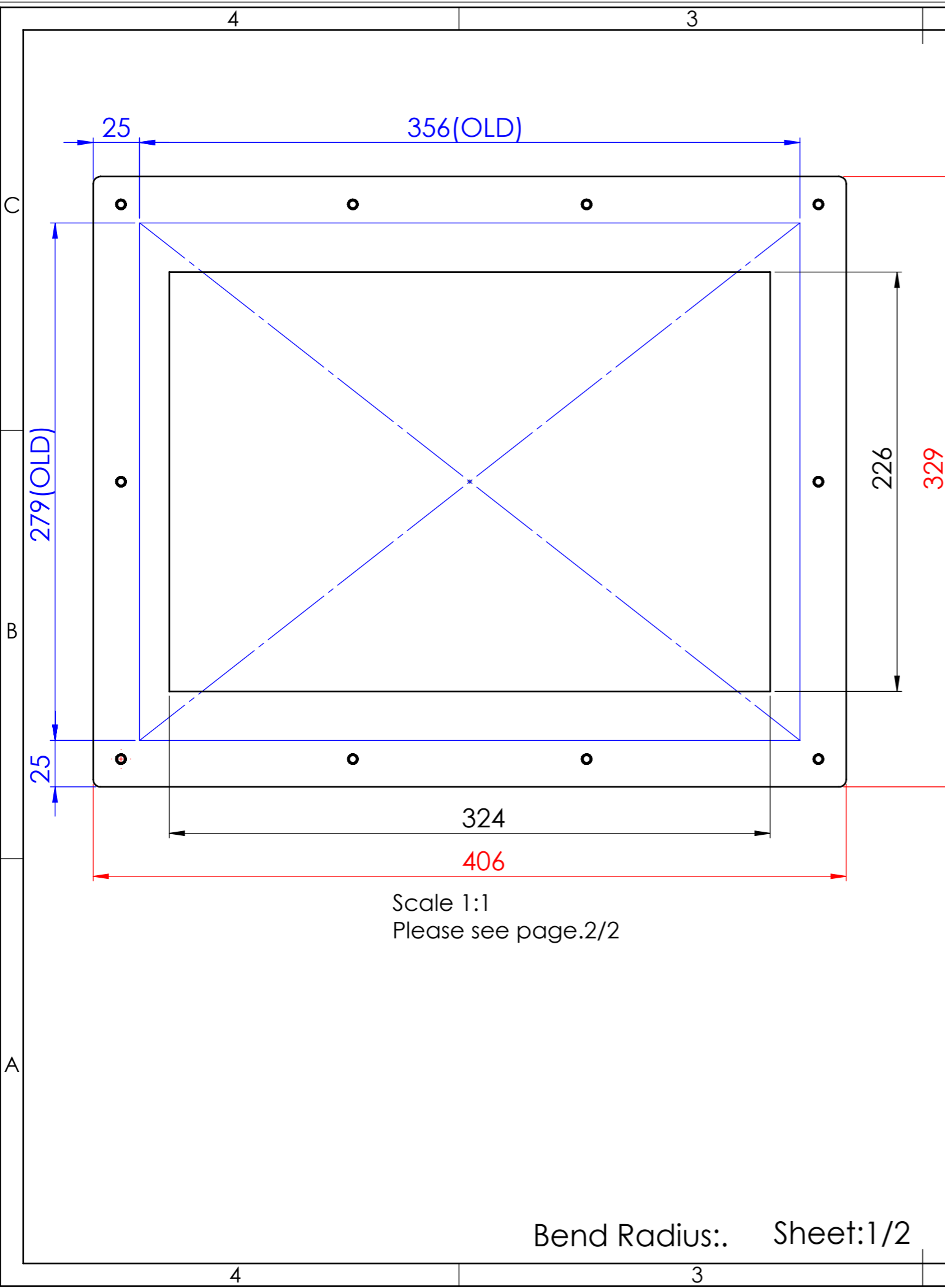


DIMENSIONS WITHOUT TOLERANCES  
DS/ISO 2768-m



Note.  
Standard nut M4 = 10 pcs.  
Lock washer M4 = 10 pcs  
put it in a separate zip bag in the package

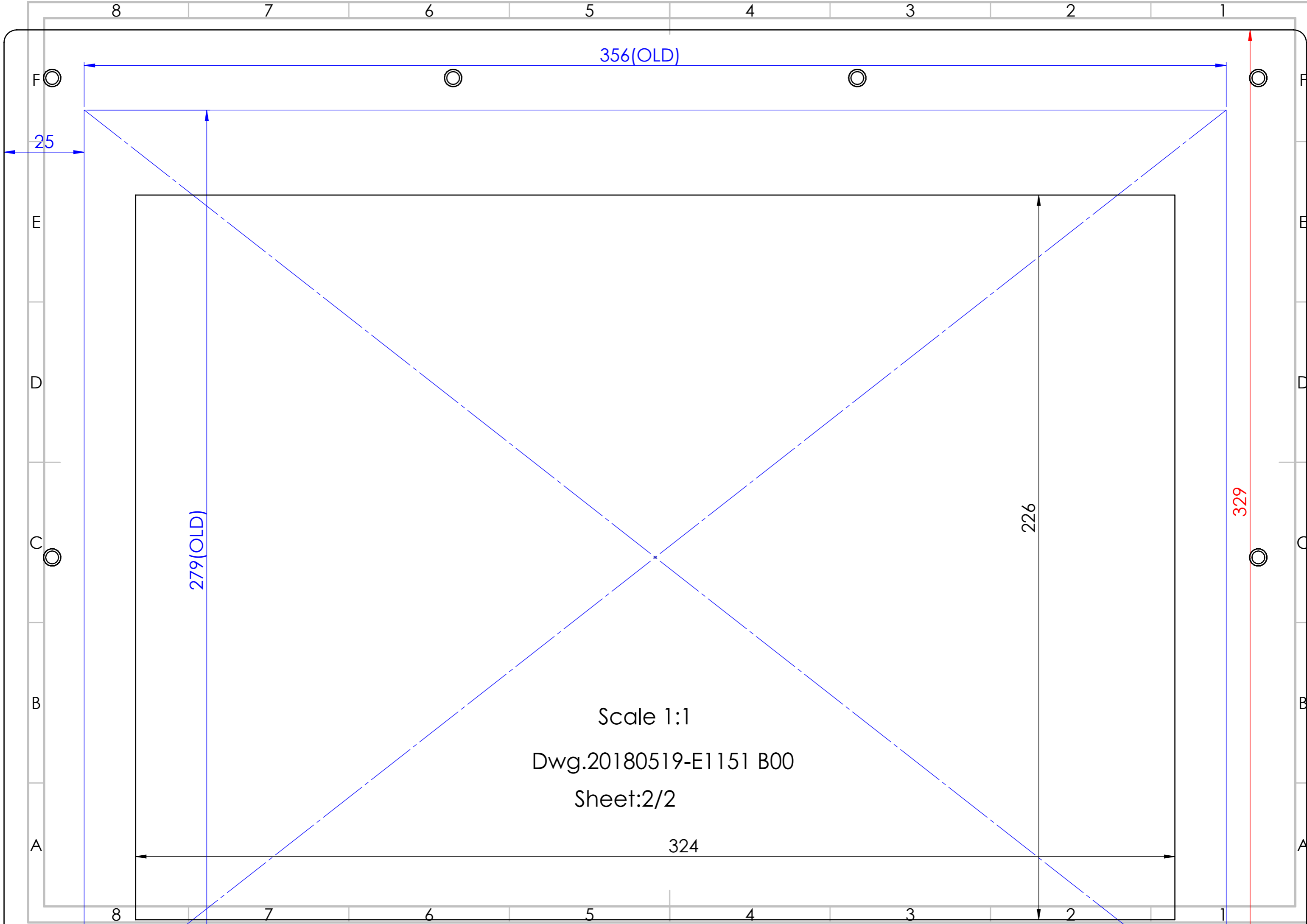


ITEM NO.	PART NUMBER	DESCRIPTION	QTY.
1	From-E1151	EG=2.0 mm.	1
2	Gasket-E1151	T=2.0 mm.	1
3	PEM FH-M4-12 X--N	-	10
4	1700000030	Nut M4	10
5	1721480160	Lock Washer	10
6	2200000504	Powder paint interpon 610 silver fine texture	0.01

Scale 1:1  
Please see page.2/2

<table border="1"> <tr> <td>X</td> <td>X</td> <td>X</td> <td>.</td> </tr> <tr> <td>REV.</td> <td>DATE</td> <td>SIGN</td> <td>UNFOLD</td> </tr> </table>	X	X	X	.	REV.	DATE	SIGN	UNFOLD	MATERIAL:	<p>THIS DRAWING REMAINS THE EXCLUSIVE PROPERTY OF THE GPV GROUP. IT SHALL NOT BE COPIED, REPRODUCED, DISCUSSED IN PART OR IN WHOLE, OR OTHERWISE MADE AVAILABLE TO THIRD PARTY WITHOUT OUR PREVIOUS WRITTEN CONSENT.</p> <p>Surface: 0 mm<sup>2</sup> Weight: 0 g.</p> <p>SCALE: 1:5</p> <p><b>A3</b></p>
	X	X	X	.						
	REV.	DATE	SIGN	UNFOLD						
	SURFACE TREATMENT:	None								
CUSTOMER ITEM NO.:	Beijer									
CUSTOMER/NO.:	.									
<p>GPV Asia (Thailand) Co., Ltd 834 Moo 4, Bangpoo Industrial Estate Soi 11-12, Sukhumvit Road, Praksa Muang Dis., Samutprakarn 10280, Thailand Tel. +66 (0) 2709 2550 Fax +66 (0) 2709 2564</p>		ITEM DESCRIPTION:	Adaptor plate from T150/E1151 to X2 pro12							
RELEASED DATE:	21/05/2018	GPV ITEM NO.:	20180519-E1151 B00							
SIGN.:	SPW	PROJECT NO.:								
		CHECKED QC DATE:								
		SIGN.:								

Bend Radius.: Sheet:1/2



356(OLD)

279(OLD)

329

226

324

Scale 1:1

Dwg.20180519-E1151 B00

Sheet:2/2

F

E

D

C

B

A

F

E

D

C

B

A

8

7

6

5

4

3

2

1

8

7

6

5

4

3

2

1

25

324